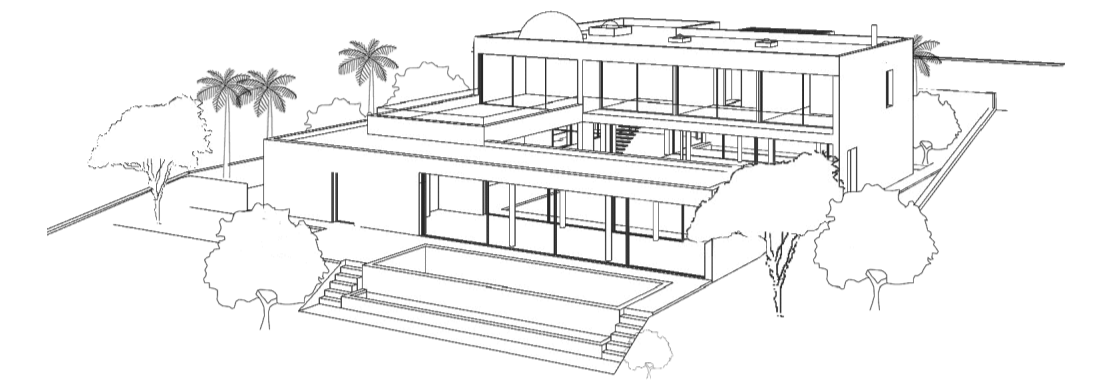


Golfside - Villa 4

Valentin de Madariaga arquitecto



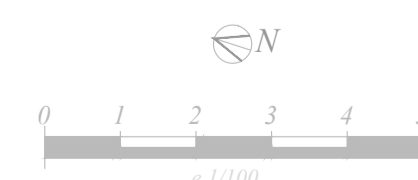
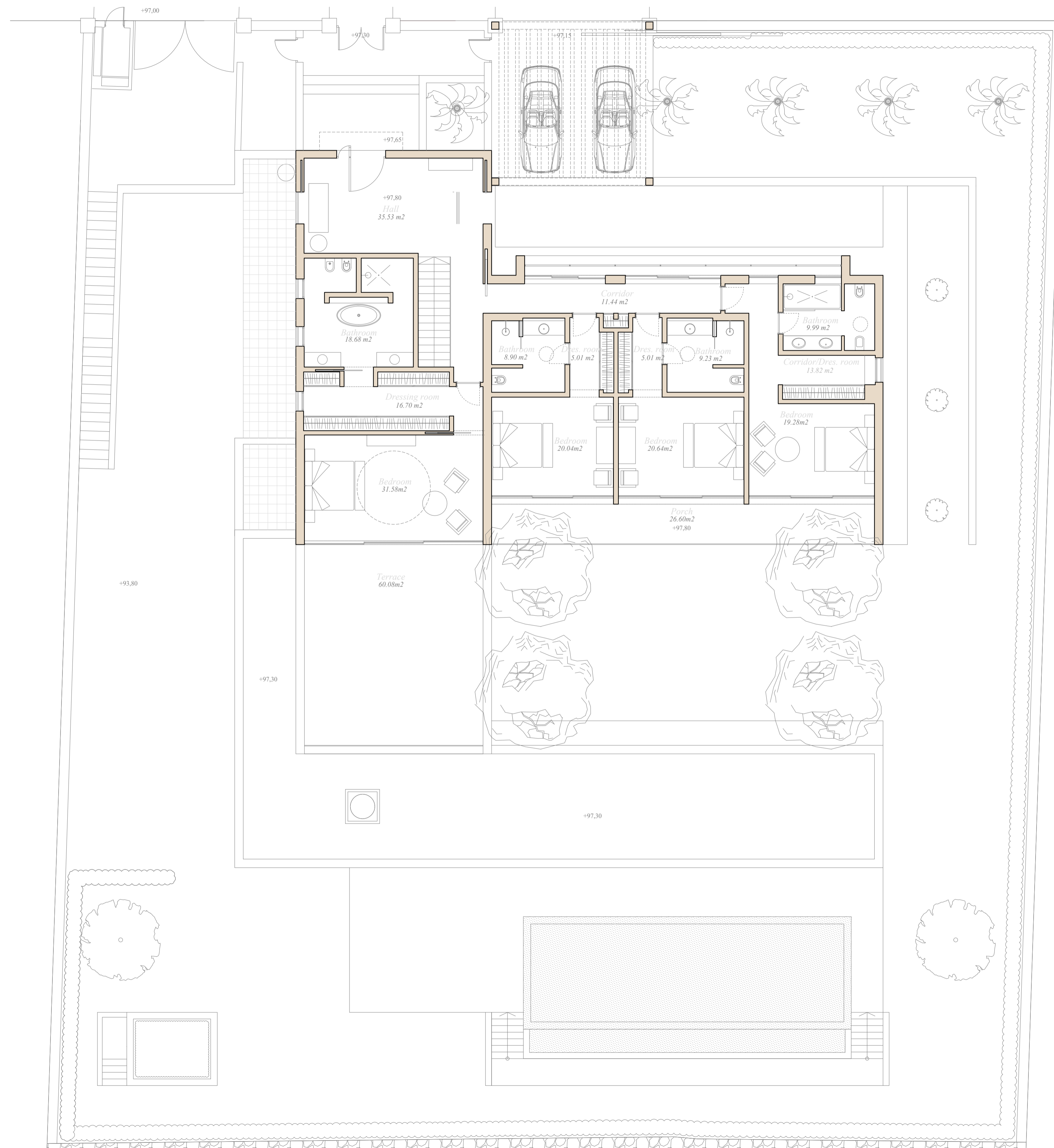
LEYENDA-LEGEND

PLANTA ENTRADA-ENTRY LEVEL

Planta Entrada	.....278,40 m <sup>2</sup>
Entry Level	.....2.996 ft <sup>2</sup>
Porches terrazas	.....94,80 m <sup>2</sup>
Porchs terraces	.....1.020 ft <sup>2</sup>

Total/Total	....640,48 m <sup>2</sup> /6.894 ft <sup>2</sup>
Porches terrazas/Porches terraces	....263,64 m <sup>2</sup> /2.837 ft <sup>2</sup>
Patio/Patio	.....32,59 m <sup>2</sup> / 350 ft <sup>2</sup>
Ext. pavimento/Paved external	....149,59 m <sup>2</sup> /1.610 ft <sup>2</sup>
Parcela/Plot Area	...1.851 m <sup>2</sup> /19.924 ft <sup>2</sup>

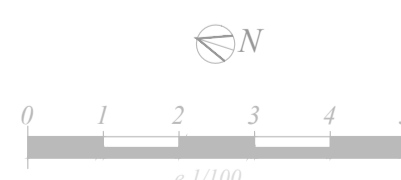
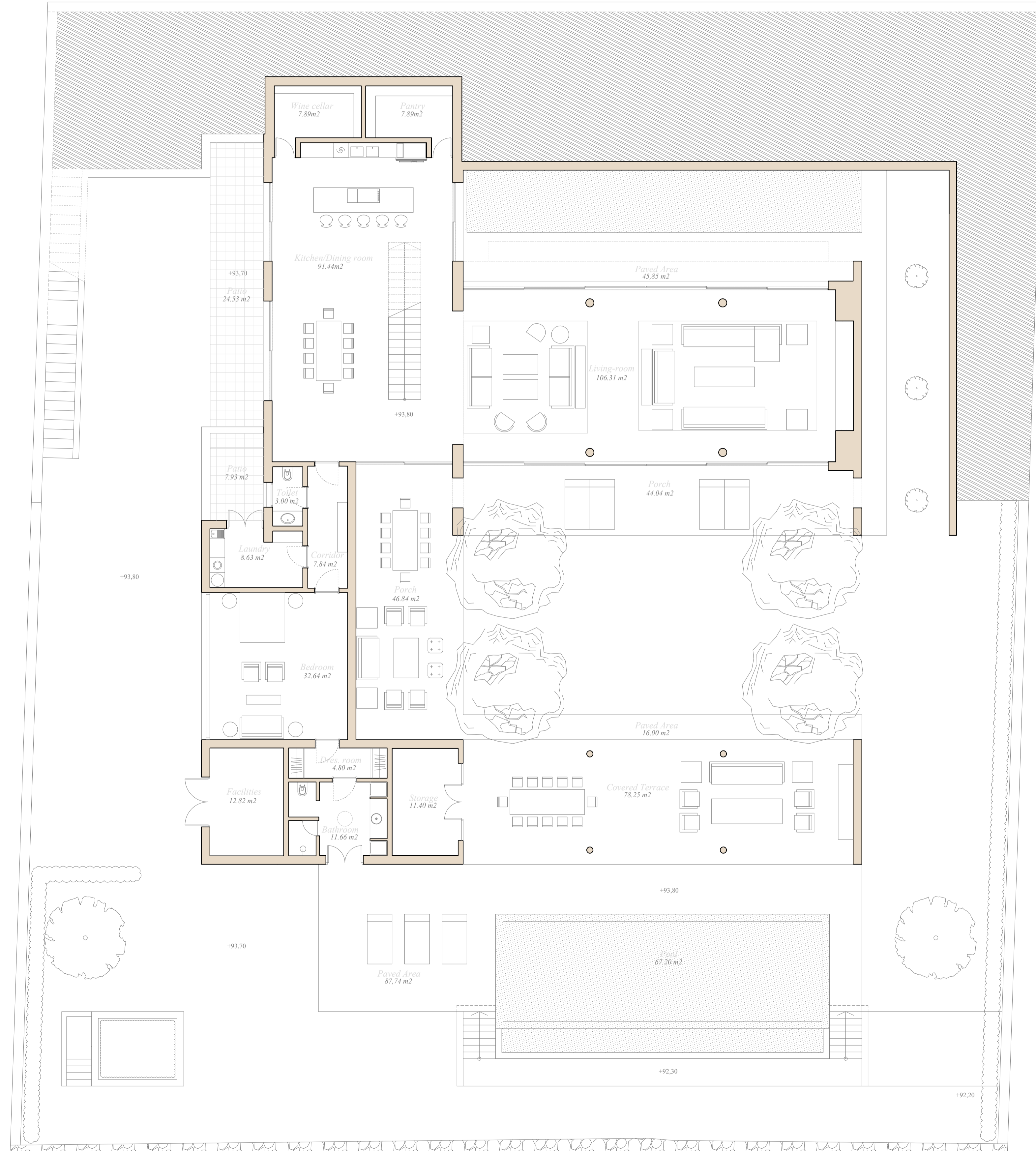
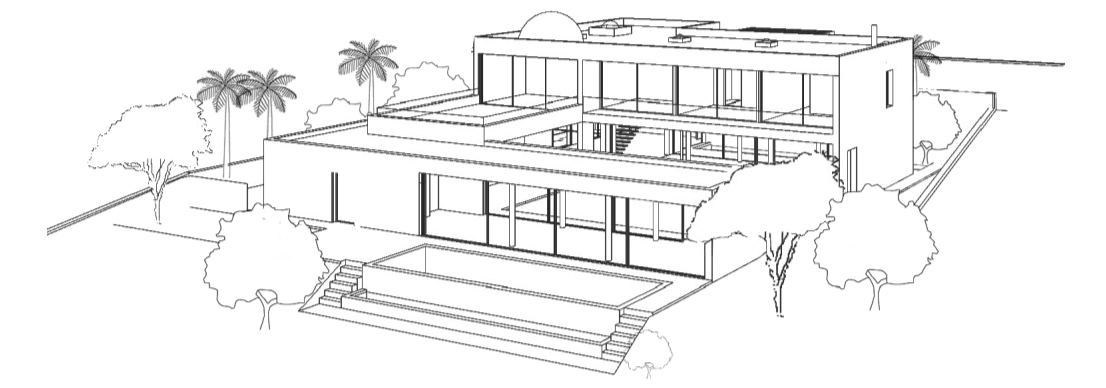
5 Dormitorios/5 Bedroom  
5,5 Baños/5,5 Bathroom





## Golfside - Villa 4

Valentin de Madariaga arquitecto



### LEYENDA-LEGEND

#### PLANTA JARDÍN-GARDEN LEVEL

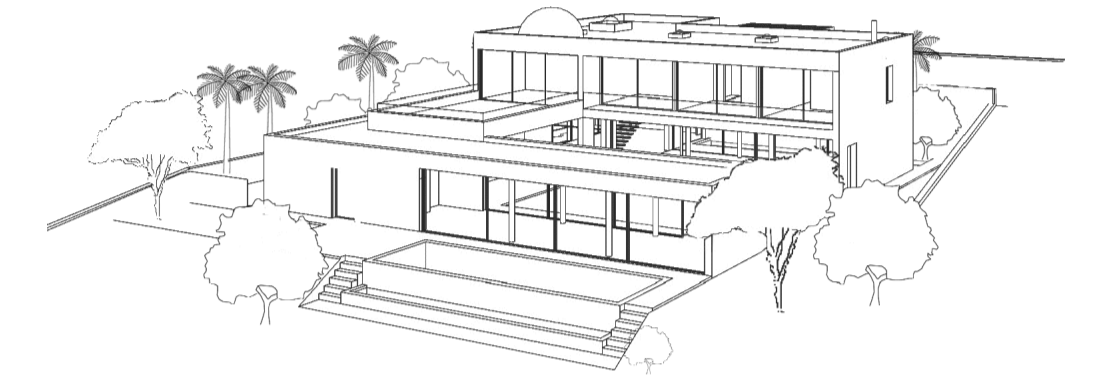
Planta Jardín	.....362,08 m <sup>2</sup>
Garden Level	.....3.897 ft <sup>2</sup>
Porches terrazas	.....168,84 m <sup>2</sup>
Porches terraces	.....1.817 ft <sup>2</sup>
Patio	.....32,59 m <sup>2</sup>
Patio	.....350 ft <sup>2</sup>
Exterior pavimentado	.....149,59 m <sup>2</sup>
Paved external areas	.....1.610 ft <sup>2</sup>
<b>Total/Total</b>	<b>....640,48 m<sup>2</sup>/6.894 ft<sup>2</sup></b>
Porches terrazas/Porches terraces	....263,64 m <sup>2</sup> /2.837 ft <sup>2</sup>
Patio/Patio	....32,59 m <sup>2</sup> / 350 ft <sup>2</sup>
Ext. pavimento/Paved external	....149,59 m <sup>2</sup> /1.610 ft <sup>2</sup>
Parcela/Plot Area	....1.851 m <sup>2</sup> /19.924 ft <sup>2</sup>

5 Dormitorios/5 Bedroom  
5,5 Baños/5,5 Bathroom



## Golfside - Villa 4

Valentin de Madariaga arquitecto

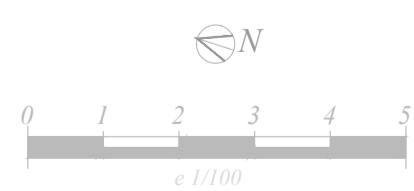
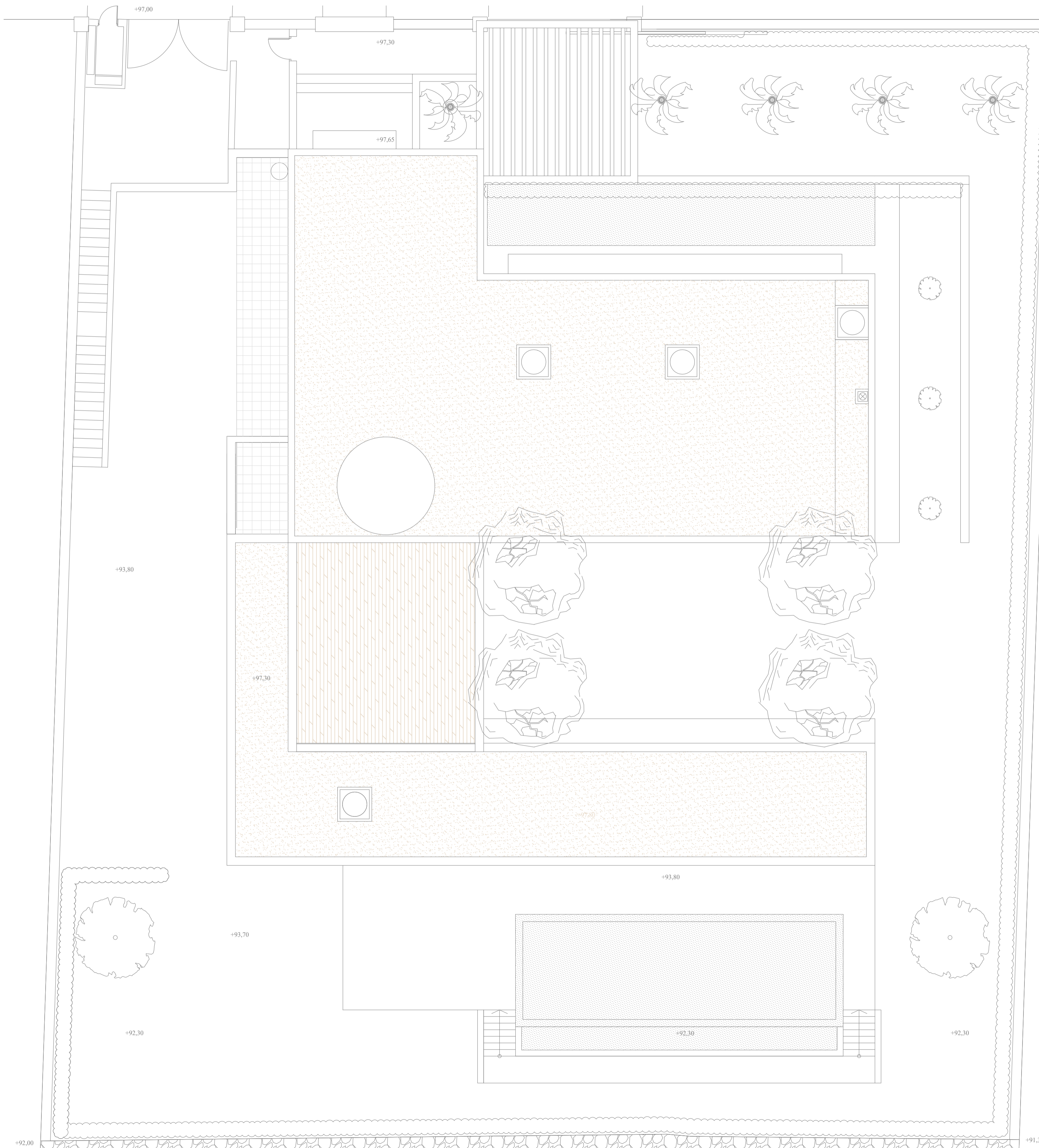


### LEYENDA-LEGEND

#### IMPLANTACIÓN-GENERAL LAYOUT

Planta Entrada/Entry Level	....278,40 m <sup>2</sup> /2.996 ft <sup>2</sup>
Planta Jardín/Garden Level	....362,08 m <sup>2</sup> /3.897 ft <sup>2</sup>
Total/Total	....640,48 m <sup>2</sup> /6.894 ft <sup>2</sup>
Porches terrazas/Porches terraces	....263,64 m <sup>2</sup> /2.837 ft <sup>2</sup>
Patio/Patio	.....32,59 m <sup>2</sup> /350 ft <sup>2</sup>
Ext. pavimento/Paved external	....149,59 m <sup>2</sup> /1.610 ft <sup>2</sup>
Parcela/Plot Area	...1.851 m <sup>2</sup> /19.924 ft <sup>2</sup>

5 Dormitorios/5 Bedroom  
 5,5 Baños/5,5 Bathroom

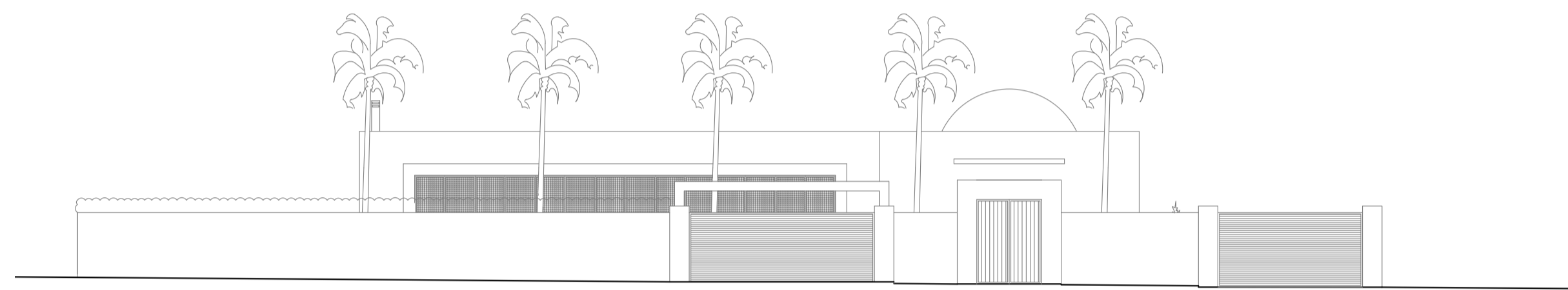




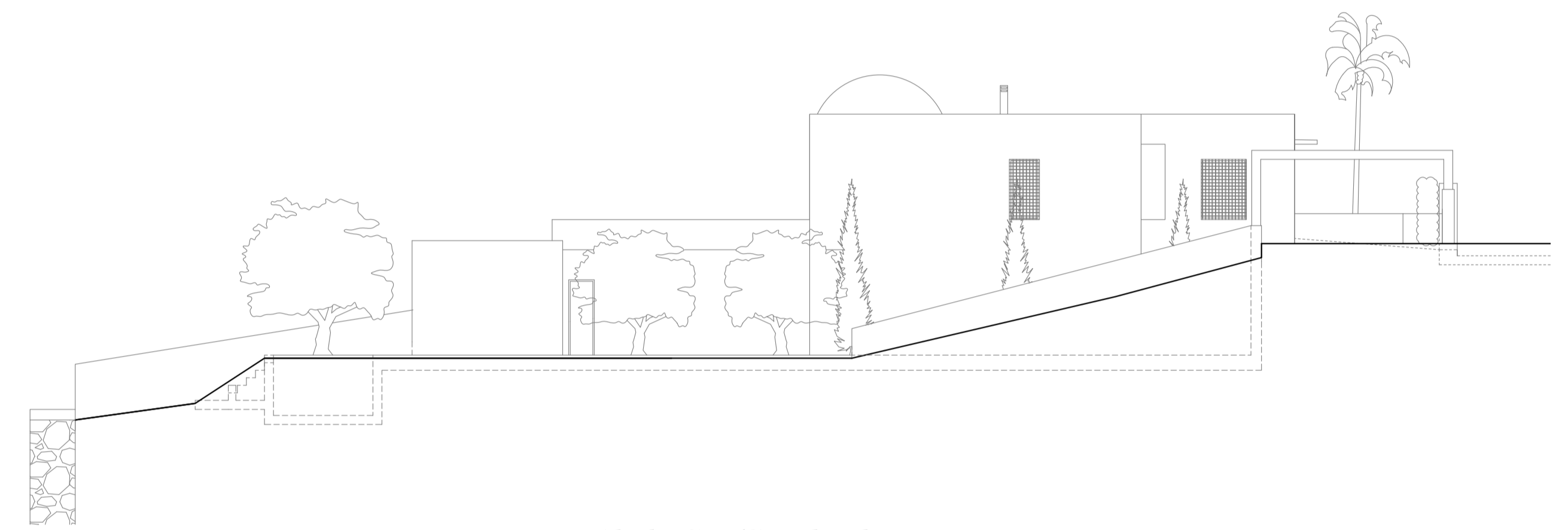
*Golfside - Villa 4*  
*Valentín de Madariaga arquitecto*

FINCA  
CORTESIN

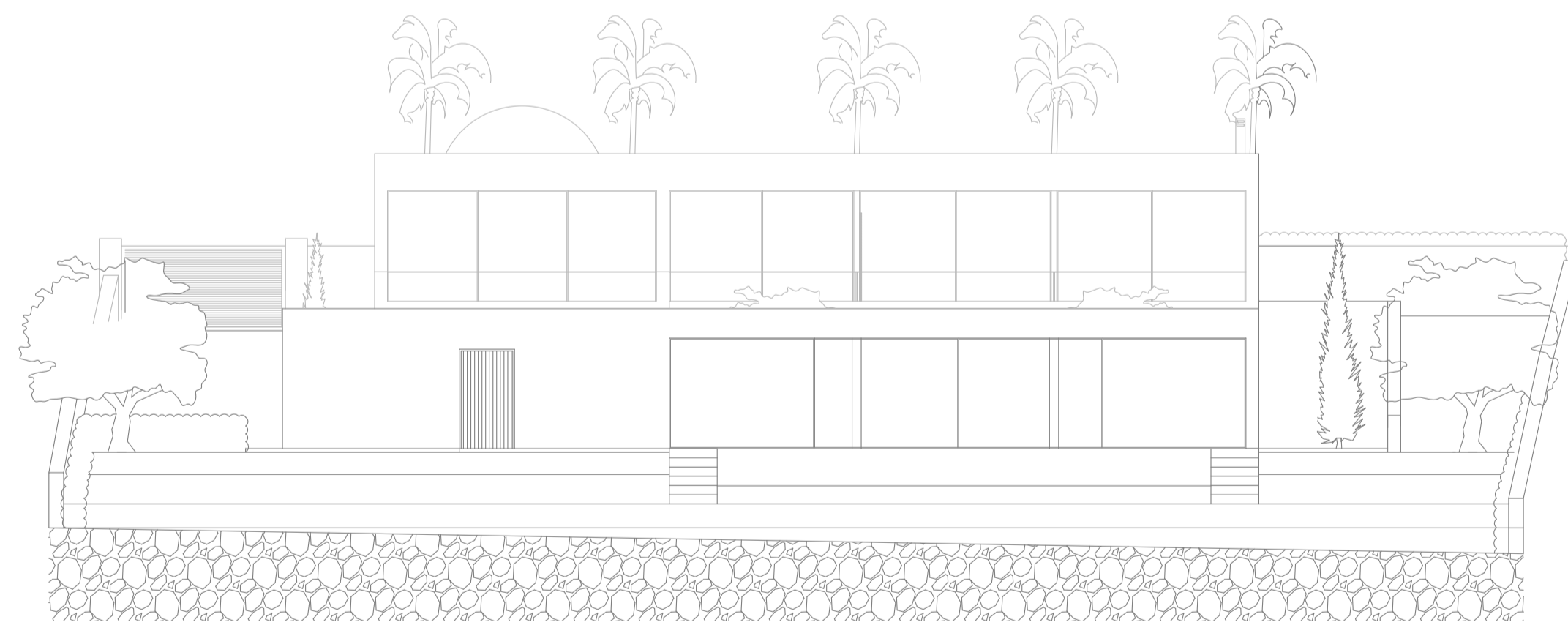
Promueve SERTINIVAL SPAIN, SL CIF: B-86.768.025  
C/Pradillo 5, bajo exterior, 28002 Madrid - Registro Mercantil de Madrid, tomo 31.124, folio 168, sección 8ª hoja M-560.14



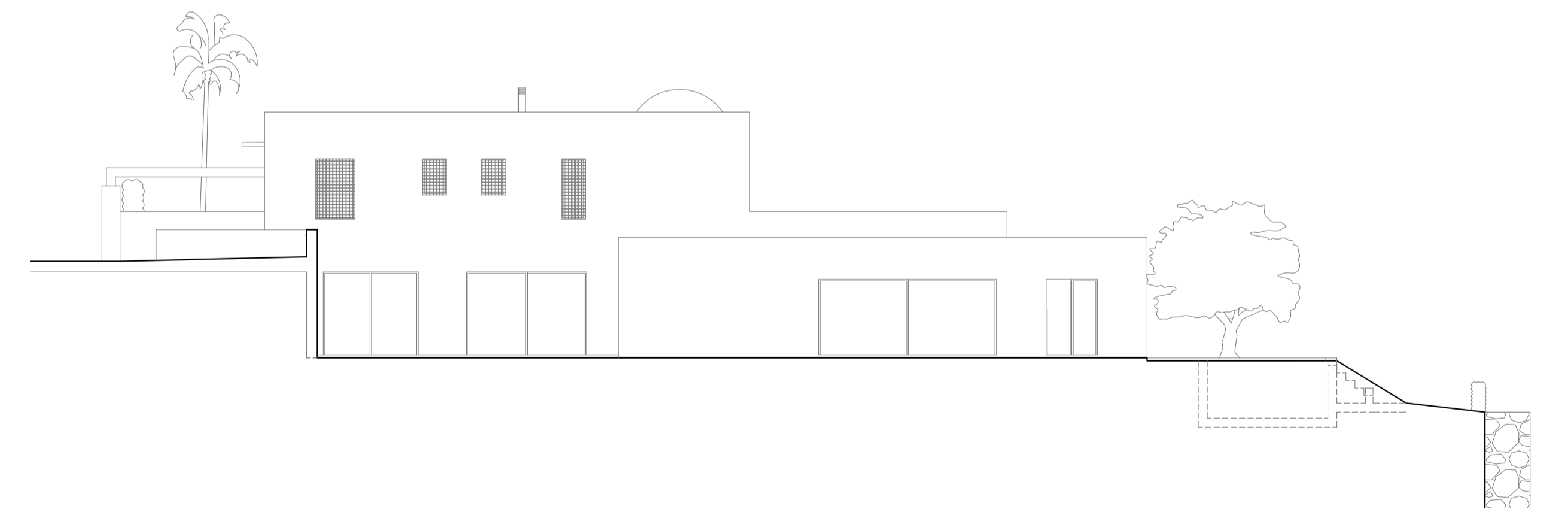
*Alzdo Este/East Elevation*



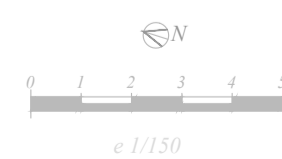
*Alzdo Sur/South Elevation*



*Alzdo Oeste/West Elevation*



*Alzdo Norte/North Elevation*



singlehome

Estos planos no tienen valor contractual y podrán experimentar variaciones por exigencias técnicas, legales, administrativas o a iniciativa del arquitecto director de las obras sin que ello implique menoscabo del nivel de calidades. Todo el mobiliario y ajardinamiento es meramente decorativo.