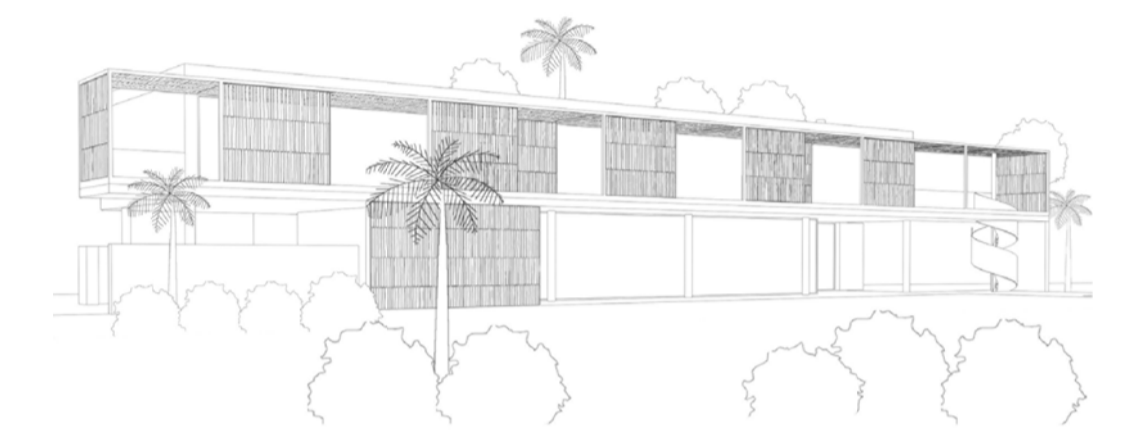


## Golfside - Villa 10

Vicens & Ramos arquitectos



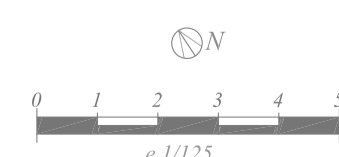
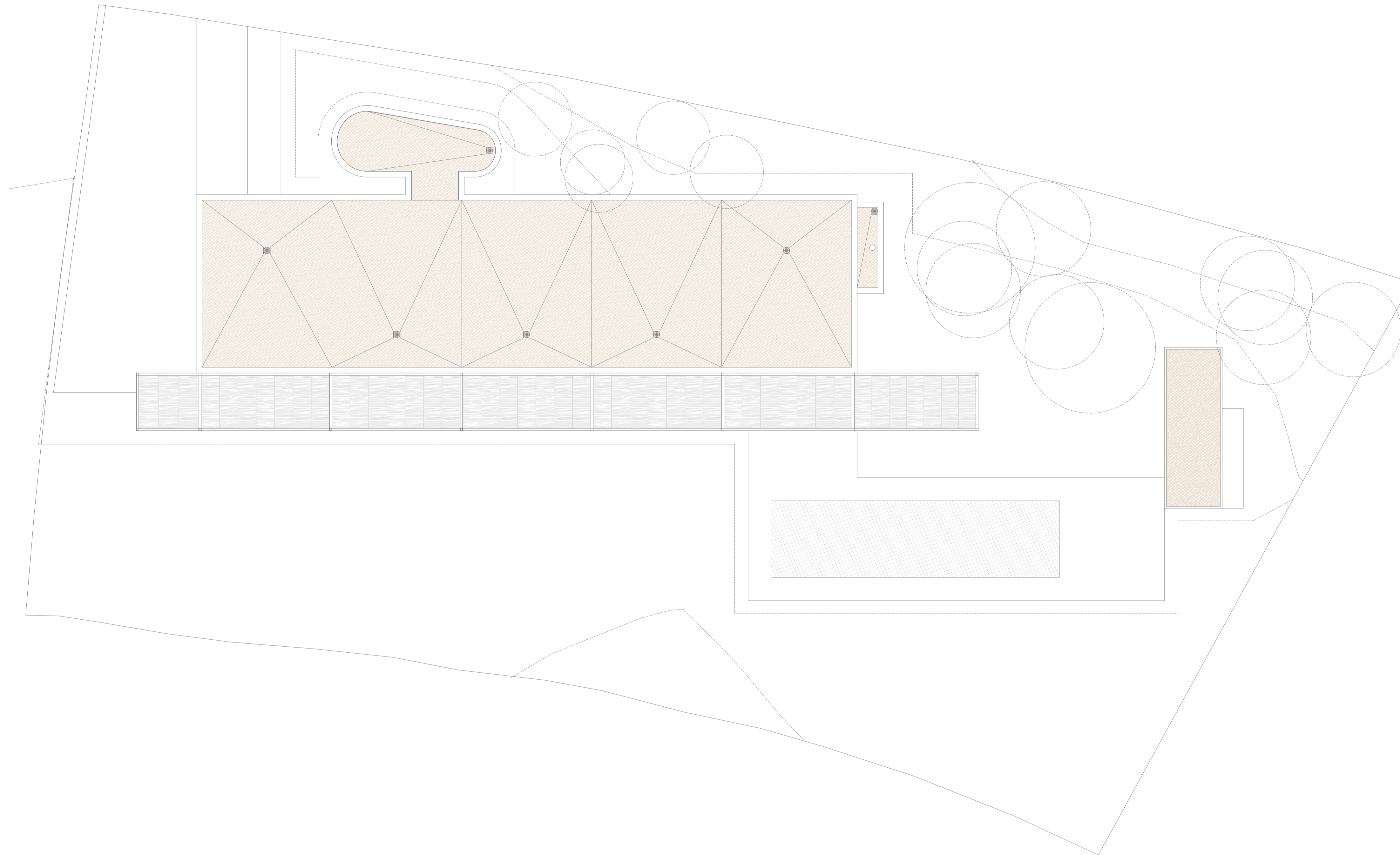
### LEYENDA-LEGEND

#### IMPLANTACIÓN-GENERAL LAYOUT

|                                   |  |
|-----------------------------------|--|
| Planta Primera/First Level        | ....327,72 m <sup>2</sup> / 3.527 ft <sup>2</sup>    |
| Planta Entrada/Entry Level        | ....253,40 m <sup>2</sup> /2.727 ft <sup>2</sup>     |
| Planta Sótano/Basement Level      | ....171,56 m <sup>2</sup> /1.846 ft <sup>2</sup>     |
| <b>Total/Total</b>                | <b>....752,68 m<sup>2</sup>/8.101 ft<sup>2</sup></b> |
| Porches terrazas/Porches terraces | ....352,88 m <sup>2</sup> /3.798 ft <sup>2</sup>     |
| Ext. pavimento/Paved external     | ....98,35 m <sup>2</sup> /1.058 ft <sup>2</sup>      |
| Parcela/Plot Area                 | ....2.145 m <sup>2</sup> /23.088 ft <sup>2</sup>     |

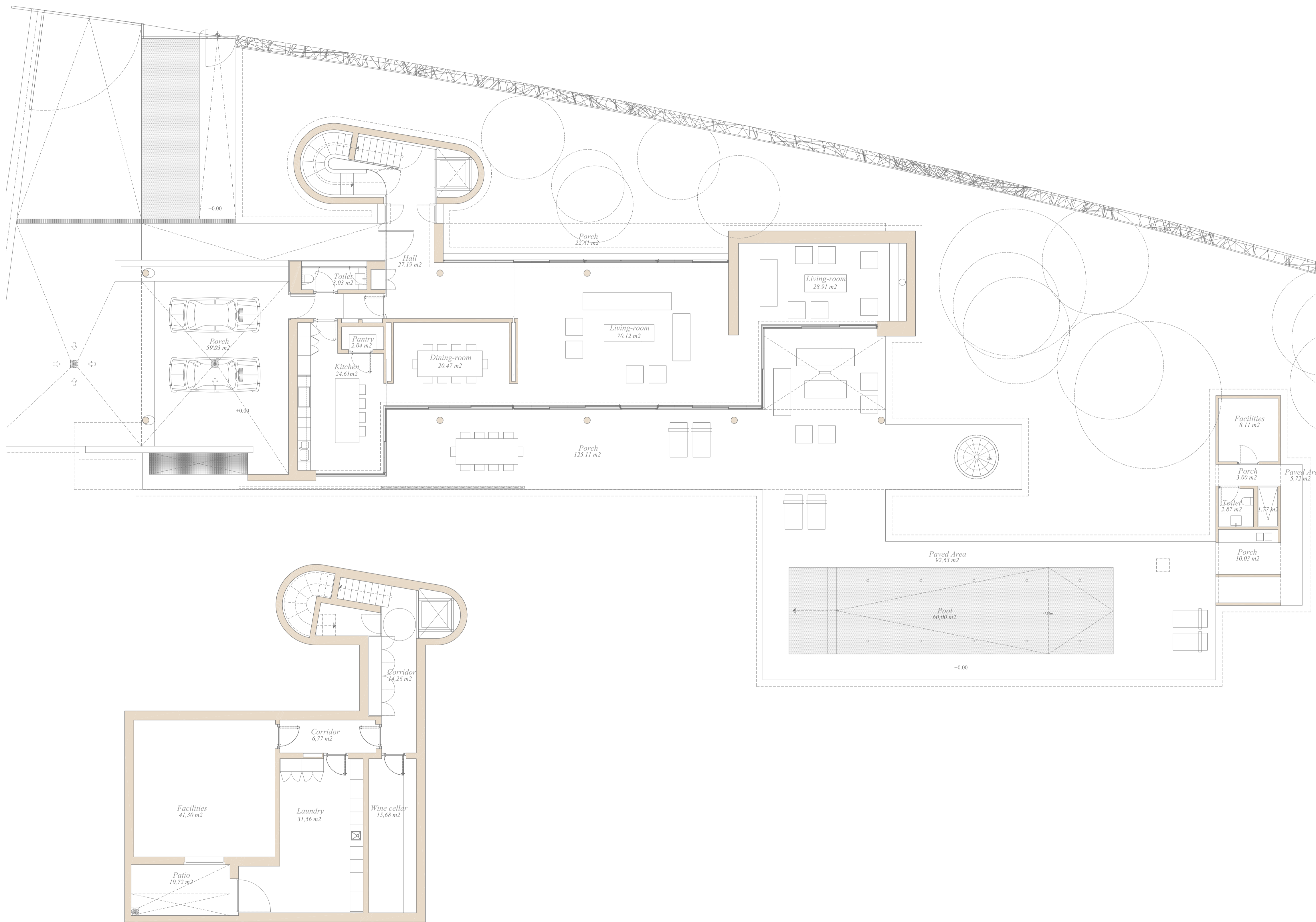
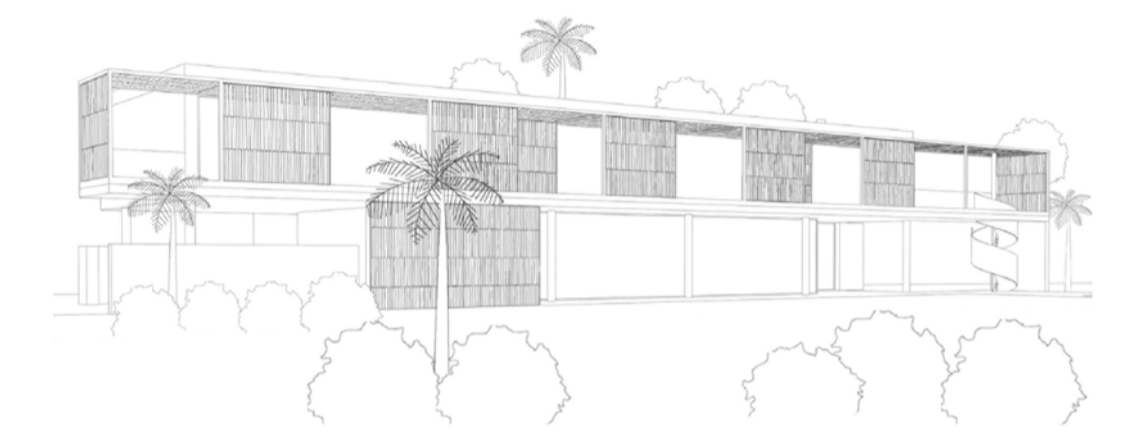
5 Dormitorios/5 Bedroom

6,5 Baños/6,5 Bathroom



## Golfside - Villa 10

Vicens & Ramos arquitectos



### LEYENDA-LEGEND

#### PLANTA ENTRADA-ENTRY LEVEL

|                      |                            |
|----------------------|----------------------------|
| Planta Entrada       | .....253,40 m <sup>2</sup> |
| Entry Level          | .....2.727 ft <sup>2</sup> |
| Porches terrazas     | .....216,74 m <sup>2</sup> |
| Porches terraces     | .....2.332 ft <sup>2</sup> |
| Exterior pavimentado | .....98,35 m <sup>2</sup>  |
| Paved external areas | .....1.058 ft <sup>2</sup> |

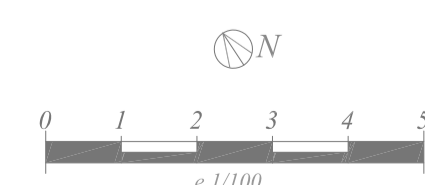
### LEYENDA-LEGEND

#### PLANTA SÓTANO-BASEMENT LEVEL

|                |                            |
|----------------|----------------------------|
| Planta Sótano  | .....171,56 m <sup>2</sup> |
| Basement Level | .....1.846 ft <sup>2</sup> |

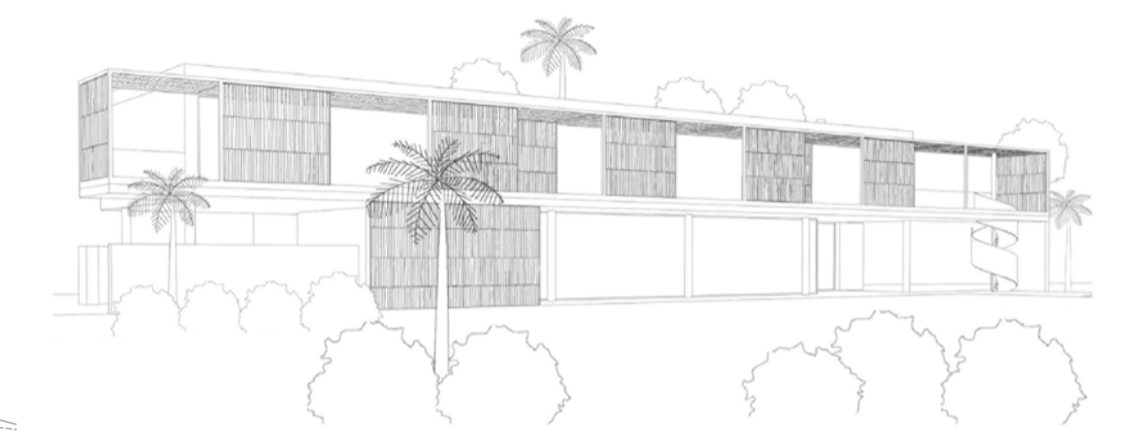
|                                   |  |
|-----------------------------------|--|
| Total/Total                       | ....752,68 m <sup>2</sup> /8.101 ft <sup>2</sup> |
| Porches terrazas/Porches terraces | ....352,88 m <sup>2</sup> /3.798 ft <sup>2</sup> |
| Ext. pavimento/Paved external     | ....98,35 m <sup>2</sup> /1.058 ft <sup>2</sup>  |
| Parcela/Plot Area                 | ....2.145 m <sup>2</sup> /23.088 ft <sup>2</sup> |

5 Dormitorios/5 Bedroom  
6,5 Baños/6,5 Bathroom



*Golfside - Villa 10*

*Vicens & Ramos arquitectos*



**LEYENDA-LEGEND**

**PLANTA PRIMERA-FIRST LEVEL**

|                         |       |                       |
|-------------------------|-------|-----------------------|
| <i>Planta Primera</i>   | ..... | 327,72 m <sup>2</sup> |
| <i>First Level</i>      | ..... | 3.527 ft <sup>2</sup> |
| <i>Porches terrazas</i> | ..... | 136,14 m <sup>2</sup> |
| <i>Porches terraces</i> | ..... | 1.465 ft <sup>2</sup> |

|  |       |  |
|--|-------|--|
| <i>Total/Total</i>                       | ..... | 752,68 m <sup>2</sup> /8.101 ft <sup>2</sup> |
| <i>Porches terrazas/Porches terraces</i> | ..... | 352,88 m <sup>2</sup> /3.798 ft <sup>2</sup> |
| <i>Ext. pavimento/Paved external</i>     | ..... | 98,35 m <sup>2</sup> /1.058 ft <sup>2</sup>  |
| <i>Parcela/Plot Area</i>                 | ..... | 2.145 m <sup>2</sup> /23.088 ft <sup>2</sup> |

5 Dormitorios/5 Bedroom  
6,5 Baños/6,5 Bathroom

