

# LAS ALBERCAS

**Building 6. Garden Residence A** 3 Bedrooms · 3,5 Bathrooms

Internal built area: 240,62 m<sup>2</sup> · Covered terrace: 61,36 m<sup>2</sup> · Uncovered terrace: 19,87 m<sup>2</sup>





Step into the spacious living area, seamlessly connected to the expansive terrace. Enriched with natural elements, textured fabrics, and high-quality details, this super comfortable space is crafted for a relaxed and inviting lifestyle.



The kitchen, adorned with warm wood and natural textures, is fully equipped for your daily needs. Ample and seamlessly integrated, it ensures a perfect flow, creating an inviting space for effortless daily living.



The master bedroom, bathed in natural light and tranquility, provides a serene haven for unwinding, resting, reading, and even working.



In this bedrooms, tranquility takes center stage, complementing the dominance of textures, rustic allure, and a natural color palette.



The three bathrooms embody luxury with marble accents, ample mirrors, and high-quality linens. A harmonious blend of elegance and functionality,

## LAS ALBERCAS



### EDIFICIO 6 PLANTA JARDÍN A

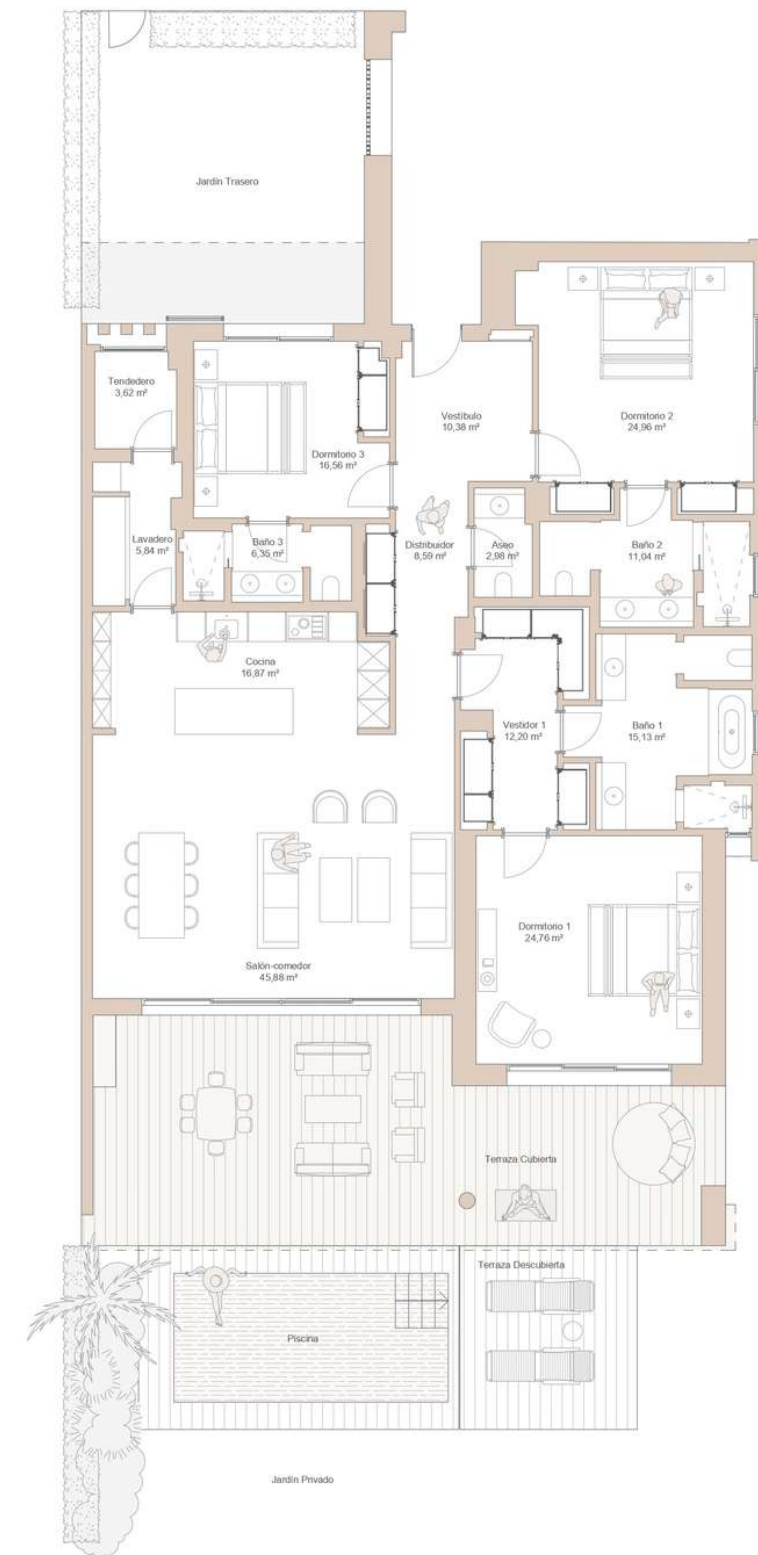
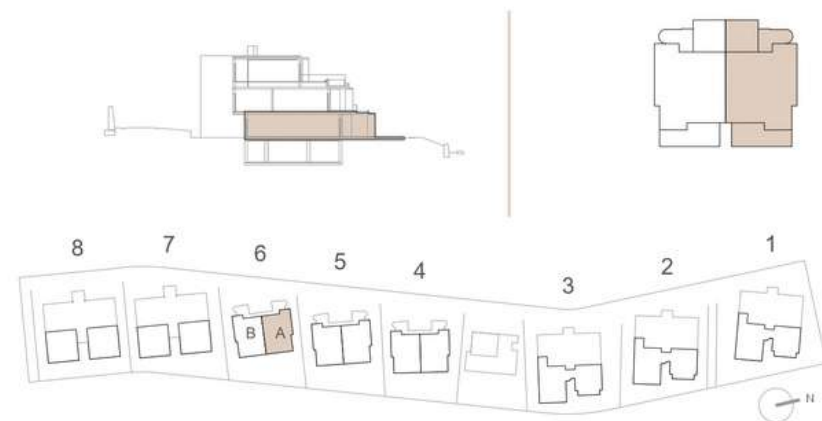
#### 3 DORMITORIOS - 3,5 BAÑOS

SUP. CERRADA:	240,62 m <sup>2</sup>
SUP. TERRAZA CUBIERTA:	61,36 m <sup>2</sup>
SUP. TERRAZA DESCUBIERTA:	19,87 m <sup>2</sup>
PISCINA:	16,90 m <sup>2</sup>
JARDIN:	aprox. 354,90 m <sup>2</sup>
PLAZA DE GARAJE n.9:	14,55 m <sup>2</sup>
PLAZA DE GARAJE n.10:	14,55 m <sup>2</sup>
TRASTERO n.4:	21,76 m <sup>2</sup>

### BUILDING 6 GARDEN RESIDENCE A

#### 3 BEDROOMS - 3,5 BATHROOMS

INTERNAL BUILT AREA:	240,62 m <sup>2</sup>
COVERED TERRACE:	61,36 m <sup>2</sup>
UNCOVERED TERRACE:	19,87 m <sup>2</sup>
SWIMMING POOL:	16,90 m <sup>2</sup>
GARDEN:	aprox. 354,90 m <sup>2</sup>
PARKING SPACE n.9:	14,55 m <sup>2</sup>
PARKING SPACE n.10:	14,55 m <sup>2</sup>
STORAGE ROOM n.4:	21,76 m <sup>2</sup>



Promueve Single Home Inversiones, S.L. - Construye Single Home S.A.

Estos planos no tienen valor contractual y podrán experimentar variaciones por exigencias técnicas, legales, administrativas o a iniciativa del arquitecto director de las obras, sin que ello implique menoscabo del nivel de calidades. Todo el mobiliario es meramente decorativo.



**Rental Services**  
[rentalservices@fincacortesin.es](mailto:rentalservices@fincacortesin.es)