

LAS ALBERCAS

Building 7. First floor B 2 Bedrooms · 2 Bathrooms

Internal built area: 197,87 m² · Covered terrace: 41,05 m² · Uncovered terrace: 69,45 m²





The integrated living area and kitchen create an expansive space, offering ample room for shared activities and becoming the stage for crafting memorable moments.



The contemporary kitchen is adorned with luxurious details and wood accents, offering an ideal place where culinary artistry and creative expression seamlessly come together.



The beautiful bedrooms exude warmth with cozy textures, bright accents, and natural elements, creating inviting sanctuaries that blend comfort and aesthetics seamlessly.



The twin bed, nestled against a backdrop of stunning Costa del Sol vistas, offers a tranquil and picturesque setting for a restful escape.



The two bathrooms provide an ideal retreat for relaxation, featuring a soothing atmosphere with tub baths, minimalist decor, warm colors, and natural elements,

LAS ALBERCAS



EDIFICIO 7 PLANTA PRIMERA B

2 DORMITORIOS - 2 BAÑOS

SUP. CERRADA:	197,87 m ²
SUP. TERRAZA CUBIERTA:	41,05 m ²
SUP. TERRAZA DESCUBIERTA:	69,45 m ²

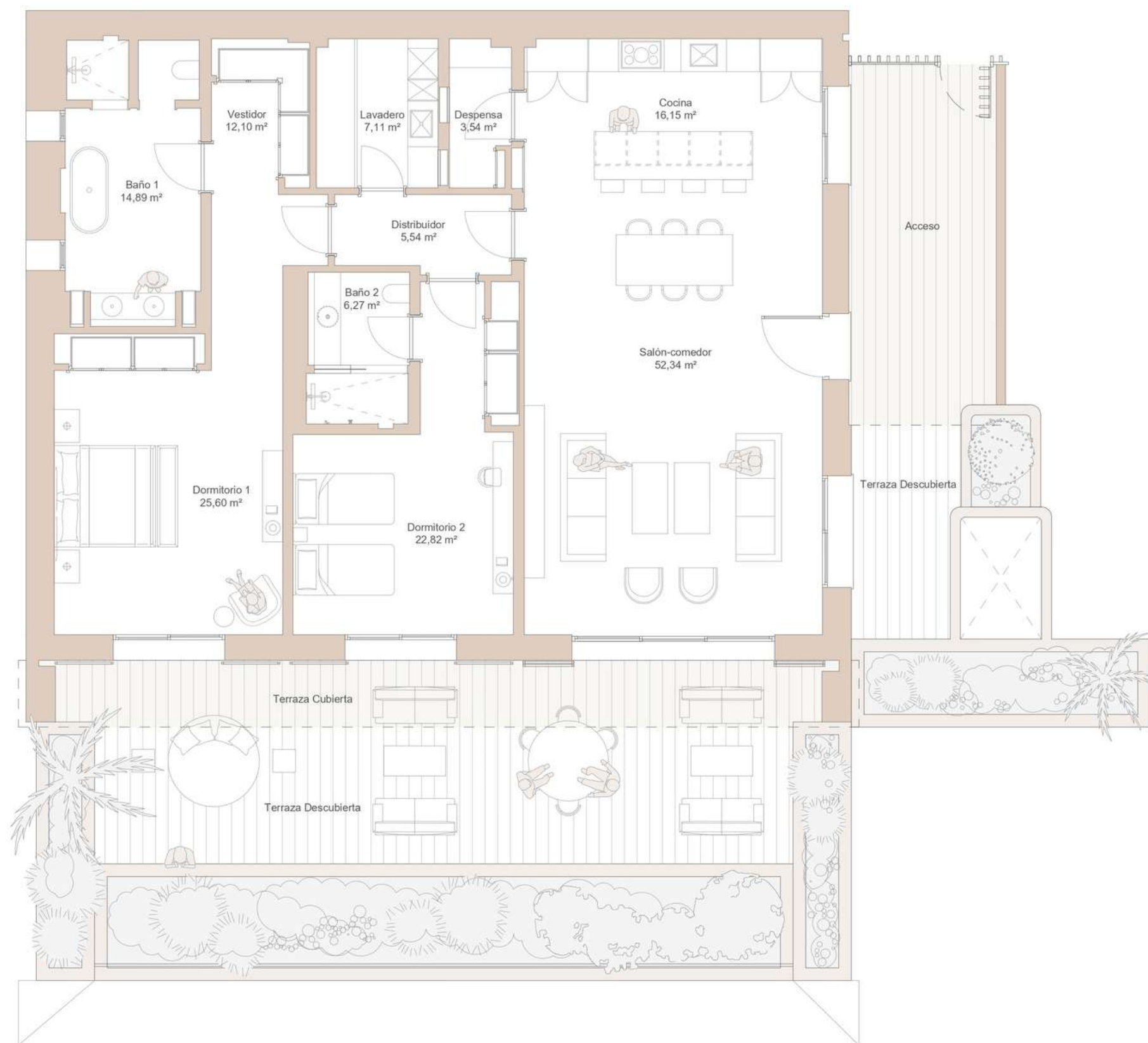
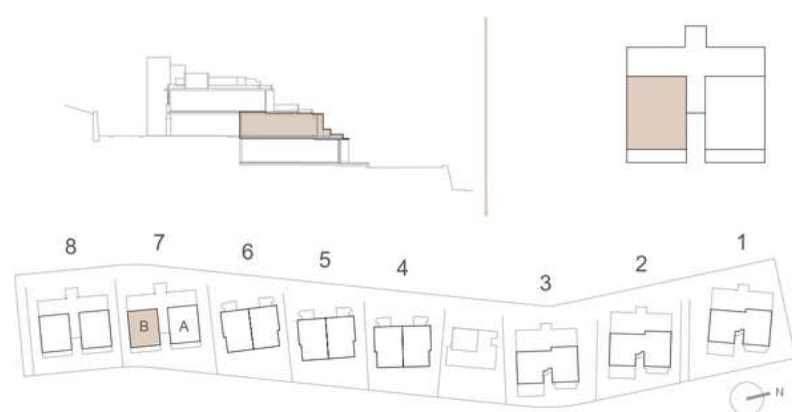
PLAZA DE GARAJE n.3:	19,55 m ²
TRASTERO n.2:	16,78 m ²

BUILDING 7 FIRST FLOOR B

2 BEDROOMS - 2 BATHROOMS

INTERNAL BUILT AREA:	197,87 m ²
COVERED TERRACE:	41,05 m ²
UNCOVERED TERRACE:	69,45 m ²

PARKING SPACE n.3:	19,55 m ²
STORAGE ROOM n.2:	16,78 m ²



Promueve Single Home Inversiones, S.L. - Construye Single Home S.A.

Estos planos no tienen valor contractual y podrán experimentar variaciones por exigencias técnicas, legales, administrativas o a iniciativa del arquitecto director de las obras, sin que ello implique menoscabo del nivel de calidades. Todo el mobiliario es meramente decorativo.



Rental Services
rentalservices@fincacortesin.es