

LAS ALBERCAS

Building 8. First floor A 2 Bedrooms · 2 Bathrooms

Internal built area: 197,87 m² · Covered terrace: 41,05 m² · Uncovered terrace: 69,45 m²





The expansive living area serves as the perfect gathering place for families and friends, offering ample room for shared activities and memorable moments.



The bright and modern kitchen is a haven for culinary enthusiasts, providing a space where cooking and creativity harmoniously converge.



Discover the spacious bedrooms, each with a beautifully appointed ensuite, where convenience meets elevated comfort.



Generously-sized bedrooms, featuring a tastefully design with attention to every single detail.



Experience a life of unrivaled comfort in a region renowned for its idyllic climate, where every moment is infused with the joy of coastal living.

LAS ALBERCAS



**EDIFICIO 8
PLANTA PRIMERA A**

2 DORMITORIOS - 2 BAÑOS

SUP. CERRADA:	197,87 m ²
SUP. TERRAZA CUBIERTA:	41,05 m ²
SUP. TERRAZA DESCUBIERTA:	89,45 m ²

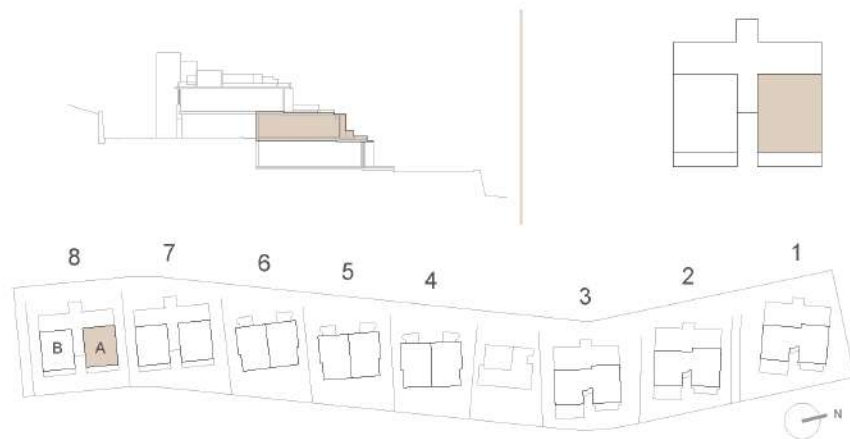
PLAZA DE GARAJE n.4:	19,57 m ²
TRASTERO n.5:	16,78 m ²

**BUILDING 8
FIRST FLOOR A**

2 BEDROOMS - 2 BATHROOMS

INTERNAL BUILT AREA:	197,87 m ²
COVERED TERRACE:	41,05 m ²
UNCOVERED TERRACE:	89,45 m ²

PARKING SPACE n.4:	19,57 m ²
STORAGE ROOM n.5:	16,78 m ²



Promueve Single Home Inversiones, S.L. - Construye Single Home S.A.

Estos planos no tienen valor contractual y podrán experimentar variaciones por exigencias técnicas, legales, administrativas o a iniciativa del arquitecto director de las obras, sin que ello implique menoscabo del nivel de calidades. Todo el mobiliario es meramente decorativo.



Rental Services
rentalservices@fincacortesin.es