

An aerial photograph of a golf course with a villa complex in the background. The foreground shows several large, mature trees on a green. The middle ground is a lush green golf course with several sand traps. In the background, a row of modern, light-colored villas with large glass windows and balconies is situated on a hillside, surrounded by dense greenery and palm trees. The sky is a clear, light blue.

VILLA THANDA

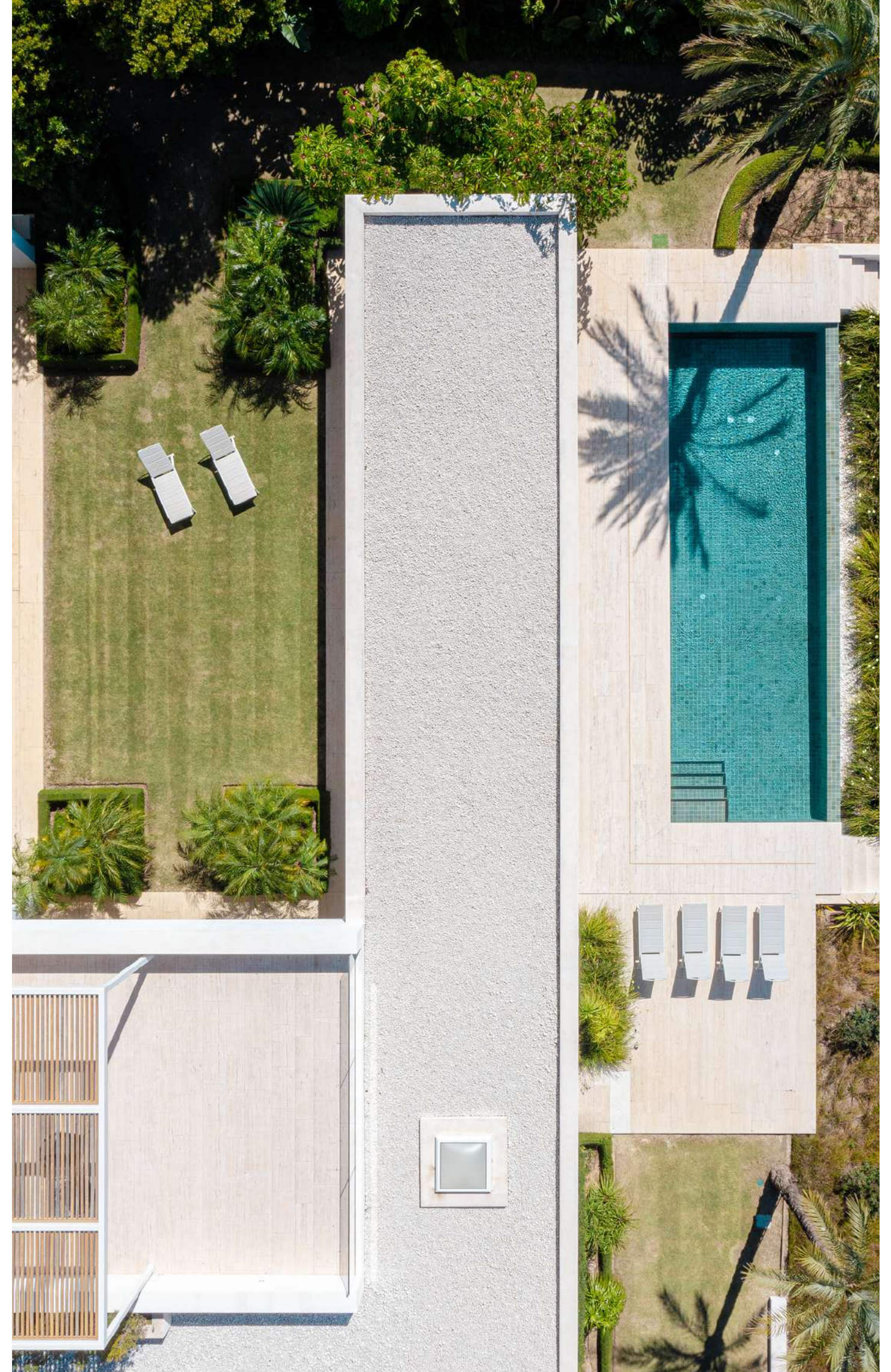
Finca Cortesin Concierge & Rental Services

FINCA 
CORTESIN
CONCIERGE & RENTAL SERVICES

This Arab-inspired villa emphasizes privacy with a secluded upper level featuring intricate latticework. Minimalist design defines the layout, offering seamless integration of indoor and outdoor spaces on the ground level.







Surrounded by the elegant architectural design and scenic beauty, the pool offers a serene retreat, enhancing the overall splendor of this hidden enclave.



The villa's outdoor allure is epitomized by a captivating terrace that overlooks the picturesque golf court, providing a year-round retreat to bask in the breathtaking vistas afforded by the beautiful climate of Costa del Sol.









In this inviting living space, an abundance of natural light streams through the surrounding windows, infusing the room with a charm that enhances its warmth and welcoming ambiance.



The furniture showcases refined elegance, with a tasteful selection of quiet and calm colors complemented by beautiful textures in the fabrics, creating an atmosphere of serene sophistication and comfort.



The open kitchen connects to a dining space, fostering a sociable atmosphere where culinary delights can be savored in harmony with the villa's inviting design.



The kitchen boasts a sophisticated design, adorned with bright colors, rich wood accents, and flooded with natural light.



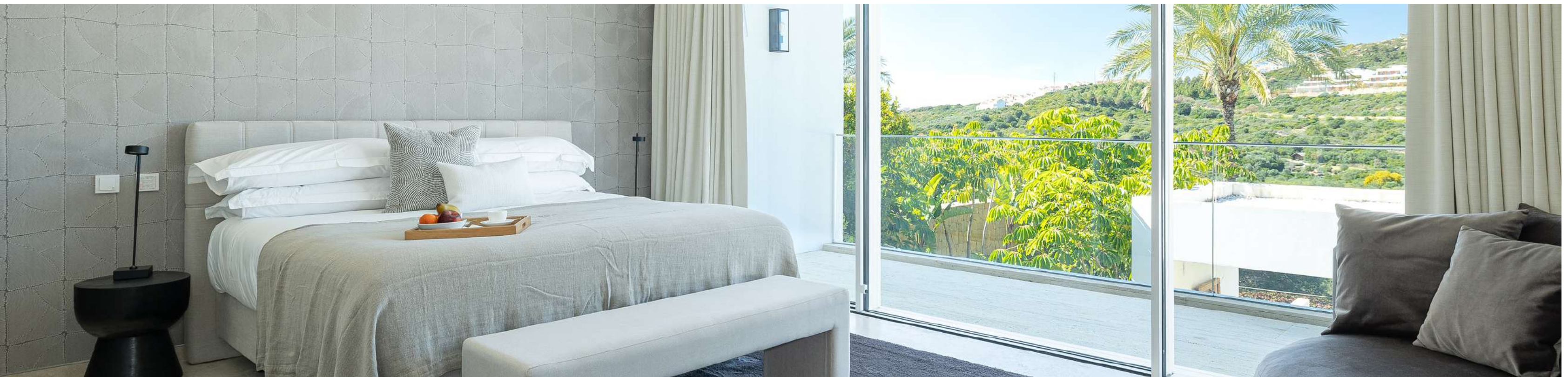


The five bedrooms emanate an atmosphere of utmost delicacy, adorned with luxurious details and immersed in stunning views, creating an oasis of opulence and comfort.

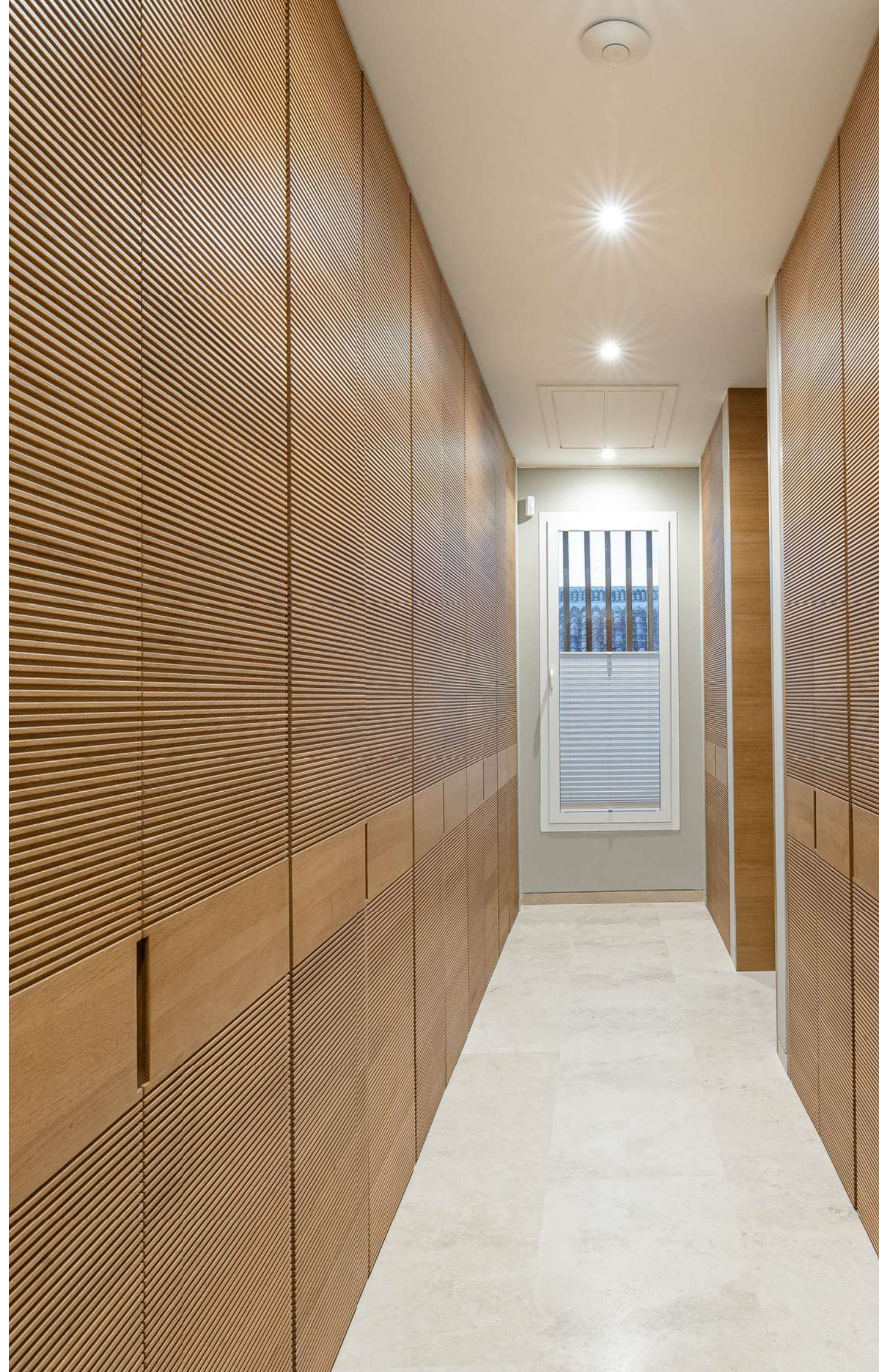


Envision the experience of awakening each morning to the captivating views that envelop the villa, offering a serene and unique start to your day.









An unparalleled opportunity awaits to immerse yourself in a place of distinctive allure, where sophisticated design, luxurious details and breathtaking surroundings converge in a one-of-a-kind haven.



FINCA CORTESIN

Golfside - Villa 4

Valentin de Madariaga arquitecto



LEYENDA-LEGEND

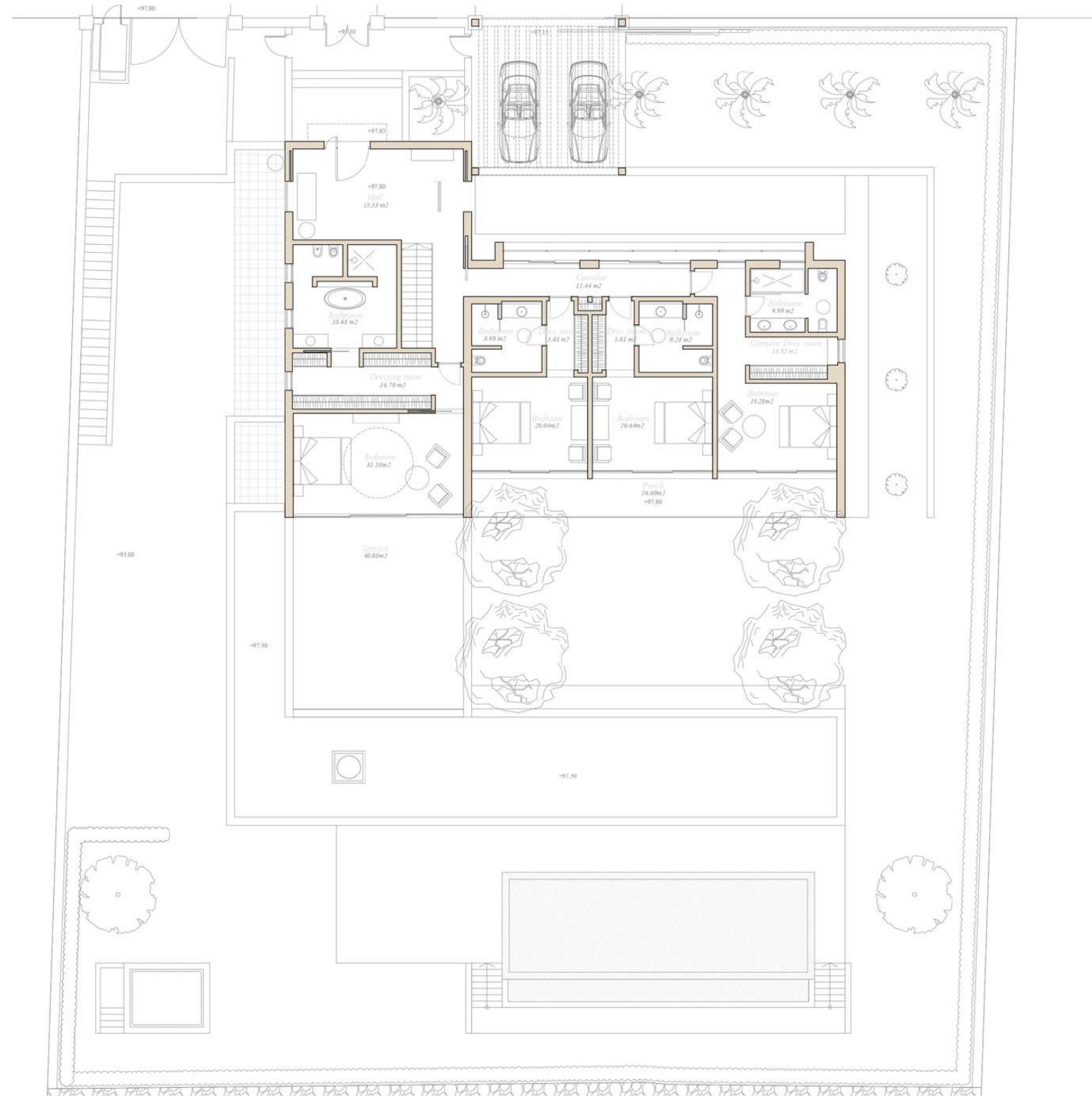
PLANTA ENTRADA-ENTRY LEVEL

Planta Entrada278,40 m ²
Entry Level2.996 ft ²
Porches terrazas94,80 m ²
Porchs terraces1.020 ft ²

Total/Total640,48 m ² /6.894 ft ²
Porches terrazas/Porches terraces263,64 m ² /2.837 ft ²
Patio/Patio32,59 m ² / 350 ft ²
Ext. pavimento/Paved external149,59 m ² /1.610 ft ²
Parcela/Plot Area	...1.851 m ² /19.924 ft ²

5 Dormitorios/5 Bedroom

5,5 Baños/5,5 Bathroom



Promueve Single Home Inversiones, S.L. - Construye Single Home S.A.

Estos planos no tienen valor contractual y podrán experimentar variaciones por exigencias técnicas, legales, administrativas o a iniciativa del arquitecto director de las obras, sin que ello implique menoscabo del nivel de calidades. Todo el mobiliario es meramente decorativo.



Golfside - Villa 4

Valentin de Madariaga arquitecto



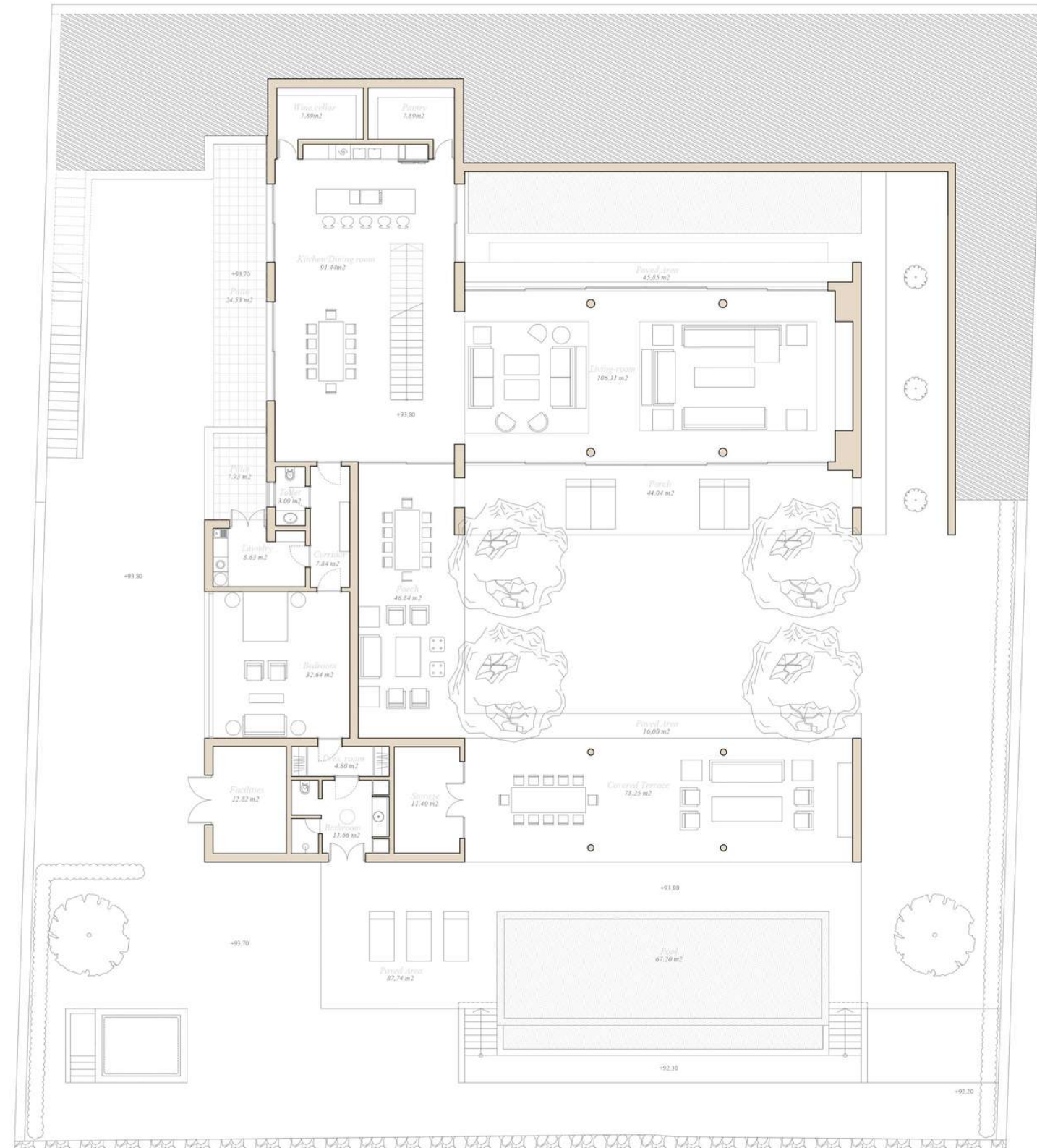
LEYENDA-LEGEND

PLANTA JARDÍN-GARDEN LEVEL

Planta Jardín362,08 m ²
Garden Level3.897 ft ²
Porches terrazas168,84 m ²
Porches terraces1.817 ft ²
Patio32,59 m ²
Patio350 ft ²
Exterior pavimentado149,59 m ²
Paved external areas1.610 ft ²
Total/Total640,48 m²/6.894 ft²
Porches terrazas/Porches terraces263,64 m ² /2.837 ft ²
Patio/Patio32,59 m ² / 350 ft ²
Ext. pavimento/Paved external149,59 m ² /1.610 ft ²
Parcela/Plot Area	...1.851 m ² /19.924 ft ²

5 Dormitorios/5 Bedroom

5,5 Baños/5,5 Bathroom



Promueve Single Home Inversiones, S.L. - Construye Single Home S.A.

Estos planos no tienen valor contractual y podrán experimentar variaciones por exigencias técnicas, legales, administrativas o a iniciativa del arquitecto director de las obras, sin que ello implique menoscabo del nivel de calidades. Todo el mobiliario es meramente decorativo.

FINCA CORTESIN

Golfside - Villa 4

Valentín de Madariaga arquitecto



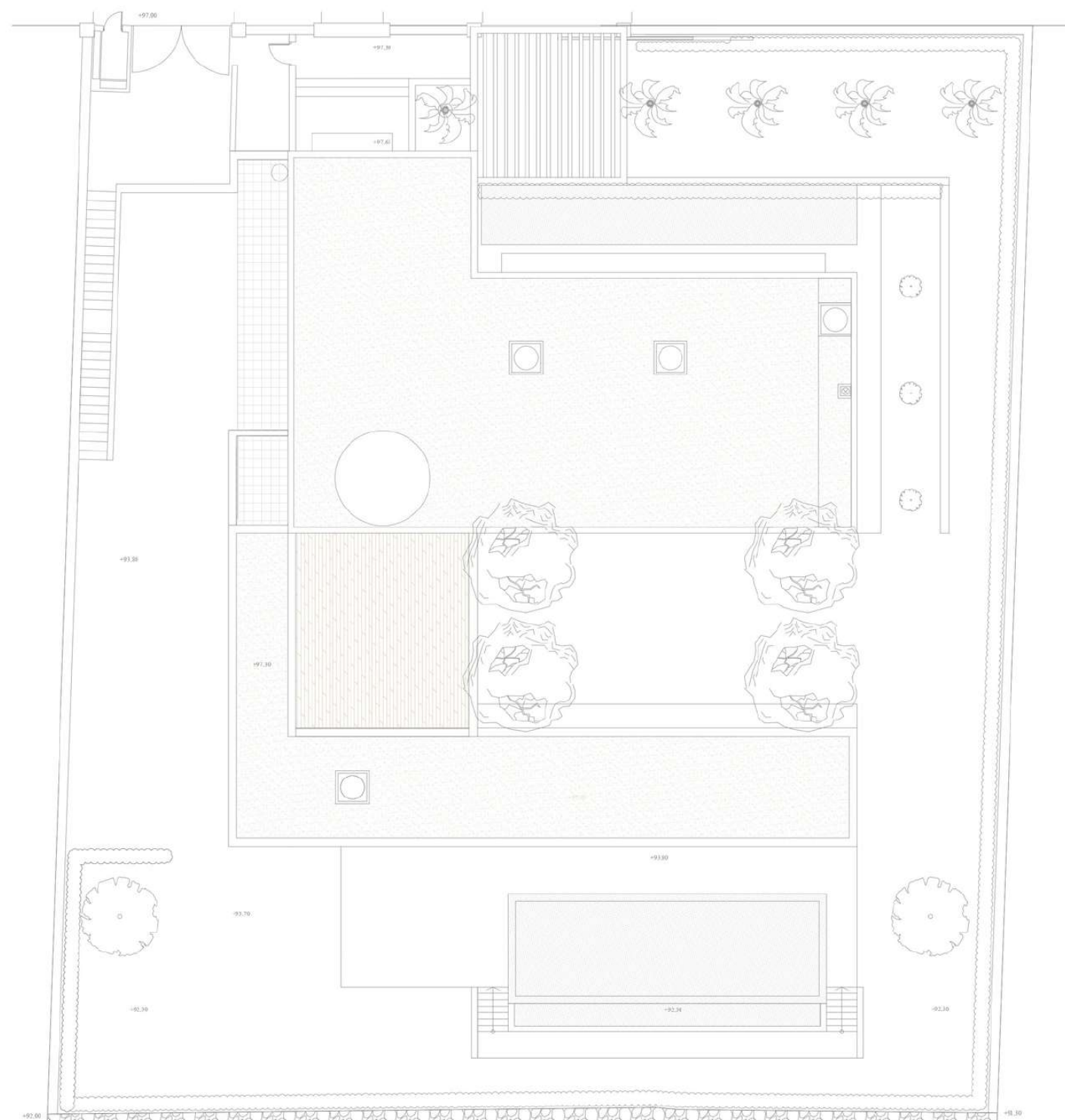
LEYENDA-LEGEND

IMPLANTACIÓN-GENERAL LAYOUT

Planta Entrada/Entry Level	...278,40 m ² /2.996 ft ²
Planta Jardín/Garden Level	...362,08 m ² /3.897 ft ²
Total/Total	...640,48 m ² /6.894 ft ²
Porches terrazas/Porches terraces	...263,64 m ² /2.837 ft ²
Patio/Patio	...32,59 m ² /350 ft ²
Ext. pavimento/Paved external	...149,59 m ² /1.610 ft ²
Parcela/Plot Area	...1.851 m ² /19.924 ft ²

5 Dormitorios/5 Bedroom

5,5 Baños/5,5 Bathroom



Promueve Single Home Inversiones, S.L. - Construye Single Home S.A.

Estos planos no tienen valor contractual y podrán experimentar variaciones por exigencias técnicas, legales, administrativas o a iniciativa del arquitecto director de las obras, sin que ello implique menoscabo del nivel de calidades. Todo el mobiliario es meramente decorativo.



Rental Services
rentalservices@fincacortesin.es